

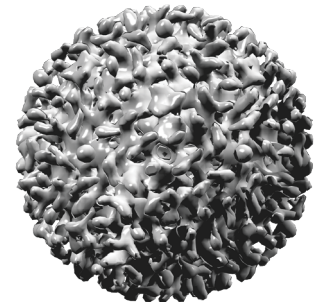
HUMAN DISEASE ELISA KITS

HCV FEATURES

- Test principle - 3rd gen. indirect HCV ELISA
- Recombinant antigens - Core, NS3, NS4, NS5
- Sample volume - 10µl
- Assay total incubation time - 30min. +30min. +15min.
- Sensitivity > 99.80%
- Specificity > 99.80%
- Cross-reactivity (other viruses) - none

HBsAg FEATURES

- Test principle - "sandwich" ELISA
- Sample volume - 50µl
- Total incubation time - 60min.+15min.
- Sensitivity > 99.75%
- Analytical sensitivity (adr, adw, ay) 0.5ng/ml
- Blood donors - 99.87%



HEV FEATURES

HEV IgM ELISA is sensitive, specific and a very useful diagnostic reagent for early diagnosis of acute Hepatitis E infections. The "capture" method of our test overcomes the low sensitivity of traditional "indirect" assays. The kit precisely distinguishes current from past infection with the virus. HEV IgG ELISA is suitable for epidemiological studies.

HEV total antibodies ELISA can detect Hepatitis E infection in all animals and can be used as the standard reference method for comparison of results obtained from different researches and veterinary laboratories.

HEV Ag ELISA intended for detection of viral antigens.

HUMAN DISEASE ELISA KITS

HIV (1+2) Ab ELISA FEATURES

- "Sandwich" method, third-generation
- Detection of antibodies to HIV (1+2)
- Simultaneous detection of multiple antibody-types
- Recombinant antigens: p24, gp41, gp120, gp36
- Sample: 100µl, no sample dilution required
- Sensitivity > 100% (500/500)
- Specificity > 99.85% (5463/5471)

HTLV FEATURES

- Double antigen "sandwich" with simultaneous detection of multiple antibodies (including IgM)
- Significant increase in sensitivity compared to the traditional "indirect" ELISA tests
- Detection of both antibodies to HTLV-1 and HTLV-2
- Easy operation: 60min. +30min.; 50µl of undiluted serum or plasma sample
- Sensitivity > 100%
- Specificity > 99.94%

HIV (1+2) + HIV-1 P24 ELISA FEATURES

- "Sandwich method"
- Detection of antibodies to HIV (1+2) and HIV-1 p24 Ag
- Simultaneous detection of multiple antibody-types
- Recombinant antigens: p24, gp41, gp120, gp36
- Monoclonal antibodies: anti-p24
- Sample: 100µl, no sample dilution required
- Total incubation time: 60min. + 30min. + 15min.
- Sensitivity 100% (677/677)
- Specificity 99.9% (14985/15000)
- Overall agreement 99.89%
- Sensitivity in antigen detection 100pg/ml

SYPHILIS FEATURES

- Double antigen "sandwich" with simultaneous detection of multiple antibodies (incl. IgM)
- Recombinant antigens P47, P17, P15
- Easy operation: 60min. + 15min.; 20µl of undiluted serum or plasma sample