



HIV-1 Integrase Antibody

Rabbit; Affinity Purified

CATALOG NUMBER: AB-INT100

LOT NUMBER: 005-097

QUANTITY: 100 µg

SOURCE: HIV-1 Integrase Antibody is an affinity purified rabbit polyclonal antibody raised against purified HIV-1 integrase protein.

RECONSTITUTION: Reconstitute lyophilized HIV-1 Integrase Antibody in 100 µL deionized H₂O.

CONCENTRATION: 1 mg/mL after reconstitution.

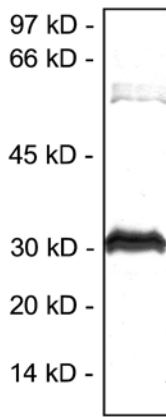
PURITY AND STERILITY: HIV-1 Integrase Antibody has been shown to be > 90% pure by SDS-PAGE. HIV-1 Integrase Antibody is provided in a non-sterile solution. The product may be rendered sterile by 0.22 micron filtration. **NOTE: THIS PRODUCT IS FOR RESEARCH USE ONLY. NOT FOR USE IN CLINICAL OR DIAGNOSTIC PROCEDURES**

SPECIFICITY: HIV-1 Integrase Antibody reacts specifically with HIV Integrase by Western blotting. Recommended dilution range for Western blot analysis: 1:1,000 - 1:10,000. Starting dilution: 1:5,000.

STORAGE AND HANDLING: Store lyophilized sample at -20°C prior to reconstitution. Once the antibody has been reconstituted, store at 4°C. **DO NOT FREEZE.** Product is stable for one year from date of shipment.

BACKGROUND: Human immunodeficiency virus type 1 (HIV-1), like all retroviruses, depends upon the integration of a DNA copy of its viral genome into host cell chromosomes as part of its infection cycle. This integration process is catalyzed by HIV-1 integrase, and the integration of HIV-1 DNA into the host chromosome is achieved by the integrase protein performing a series of DNA cleaving and ligation reactions.

HIV integrase is a multidomain, 31 kDa enzyme produced from the C-terminal portion of the HIV Pol gene product. The enzyme consists of three domains: an N-terminal HH-CC zinc finger domain believed to be partially responsible for multimerization, a



Western blot detection of purified human immunodeficiency virus integrase (HIV-1 Integrase). Primary antibody (1:10,000 dilution) and AP-conjugated anti-rabbit IgG secondary antibody per manufacturer's protocol. (WB7105; Invitrogen; 1:10,000 dilution).

central catalytic domain and a C-terminal DNA binding domain (1). Integrase is responsible for the integration of proviral DNA into the host genome, which is essential for HIV replication. Therefore, integrase remains an important antiviral target for new anti-HIV therapeutics (2-5)

REFERENCES:

1. Engelman A, Bushman FD, Cragie R, Identification of Discrete Functional Domains of HIV-1 Integrase and Their Organization Within an Active Multimeric Complex. *Embo J* 12:3269-3275 (1993).
2. Englund G, Theodore TS, Freed EO, et al, Integration Is Required for Productive Infection of Monocyte-Derived Macrophages by Human Immunodeficiency Virus Type 1. *J Virol* 69:3216-3219 (1995).
3. Bushman FD, Craigie R, Activities of Human Immunodeficiency Virus (HIV) Integration Protein In Vitro: Specific Cleavage and Integration of HIV DNA. *Proc Natl Aca Sci USA* 88:1339-1342 (1991).
4. Farnet CM, Bushman FD, HIV cDNA Integration: Molecular Biology and Inhibitor Development. *AIDS* 10 Suppl A:S3-11 (1996).
5. Hong H, Neamati N, Wang S, Nicklaus Mc, Mazumder A, Zhao H, Burke TR Jr, Pommier Y, Milne GW, Discovery of HIV-1 Integrase Inhibitors by Pharmacophore Searching, *J Med Chem* 40(6):930-936 (1997).



XpressBio
4650 Wedgewood Blvd., STE 103
Frederick, MD 21703 USA
Tel: 301-228-2444 Fax: 301-560-6570
Toll Free: 888-562-8914
www.xpressbio.com info@xpressbio.com

For Research Use Only

Not for Diagnostic Use