



Distributed by:

XpressBio
4650 Wedgewood Blvd.
Suite 103
Frederick, MD 21703

301-228-2444
xpressbio@xpressbio.com
www.xpressbio.com

Negative Primer Set 6

Catalogue no: CT-8000014



Chromatrap®'s Negative Primer Set 6 provides the necessary tools required for a successful negative qPCR primer control to validate your CHIP assay. It promises to provide a reliable negative gene target for validation of your CHIP experiment. It is a complete primer set including both forward and reverse primers, with sufficient primer mix supplied for a whole 96 well plate. Chromatrap®'s Negative Primer Set 6 is not suitable for use with non-human species.

Background:

Chromatrap®'s Negative Primer Set 6 amplifies a 189 base pair region of the transcription start site of the GAPDH (Glyceraldehyde 3-phosphate dehydrogenase) gene.

It is a negative gene target for the acetylated histone mark H3K4me1.

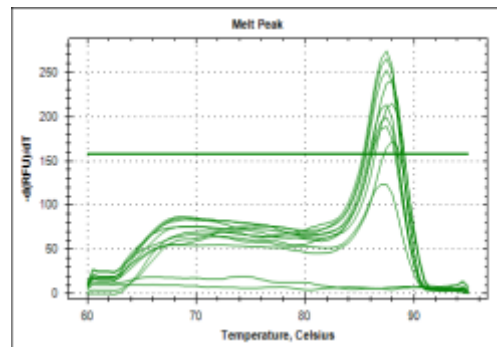
Suggested Usage:

| Primer Set | Suggested Dilution | Figure |
|-----------------------|---|--------|
| Negative Primer Set 6 | Dilute from 4µM (provided) to 1µM working concentration | 1 |

Please note: Optimal dilutions should be determined by the user. These volumes are stated as guidelines only.

Figure 1. Melt Curve of Negative Primer Set 6

Negative Primer Set 6 was run at a working concentration of 1µM. The melt curve confirms that only one PCR product is amplified with this primer set during qPCR.



Distributed by:



Advancements in Epigenetics

*This product is for research use only. There is a possibility that results may vary between antibody lots.
Company registered in England no 2047818 Registered office: 7 Regis Place, Bergen Way, Kings Lynn, PE30 2JN United Kingdom