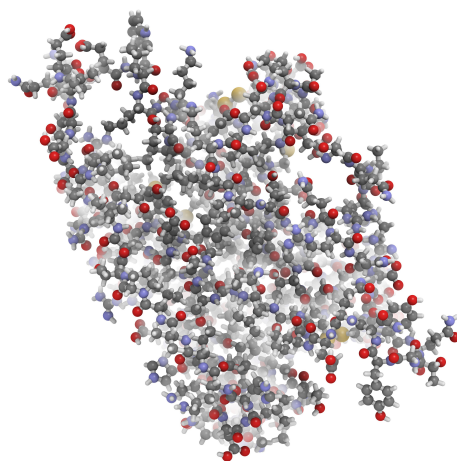


BIOMARKER ASSAYS

MOUSE, RAT, HUMAN

Advantages:

- Ready-to-use kits complete with all necessary reagents
- High specificity and sensitivity
- Strict quality control for precision and reproducibility
- Over 6,000 kits available



Kit Components:

- Pre-coated ELISA plate (48 or 96 wells)
- Biotin-labeled antibody
- Lyophilized standard
- Buffers and substrates

